




ALINTA
TEAMWEAR

Table of **CONTENTS**

AUSTRALIAN OFFICE

info@alinta.com
+612 4321 0433

NEW ZEALAND OFFICE

info@alintaapparel.co.nz
+643 3665979

ON FIELD

Pro-fit Rugby	5
Club Rugby	6
Football	7
AFL	8
Basketball	9
Cricket	10
Netball/ Hockey	11
Athletics	12

TRAINING/ OUTERWEAR

Polos	15
tees	16
Singlets	17
Shorts	18
Hoodies	19
Track Jackets	20
Track Pants	21
Football Socks	22
At Once products	23
Fabrics	25
Size Guide	27

A close-up photograph of a person's upper torso wearing a dark blue athletic jersey. The jersey features a white V-neck collar and two horizontal orange stripes across the chest. A small, dark blue stylized logo is positioned on the upper orange stripe. The jersey has a textured, mesh-like pattern on the blue sections. The text "ON FIELD" is overlaid in large, white, bold, sans-serif capital letters across the center of the image.

ON FIELD



Pro-fit Rugby **5**

Club Rugby **6**

Football **7**

AFL **8**

Basketball **9**

Cricket **10**

Netball/ Hockey **11**

Athletics **12**



PRO-FIT RUGBY JERSEY

- Ultimate fit & comfort
- Reinforced seams
- Grip technology

NECKLINE: 0037				FEATURES	
				TRIMS:	TRIMS:
Color:	GRAY	NAVY	RED	Get Gripper on Chest	GPS Pocket on Back Yoke
Handknit:	Yes	No	No		

PRO-FIT RUGBY



PRO01



PRO02



PRO03



PRO04



PRO05

PRO-FIT RUGBY SHORTS

- Ultimate fit & comfort
- Reinforced seams
- Lycra gusset for extra strength



PRO06



PRO07



PRO08



PRO09



PRO10



CLUB RUGBY



CLUB RUGBY SHORTS

- Ultimate fit & comfort
- Reinforced seams
- Lycra gusset for extra strength



CLUB RUGBY JERSEY

- Comfort fit to suit all body shapes
- Reinforced seams
- Engineered collar options



CLB01



CLB02



CLB03

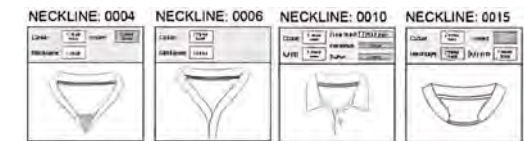


CLB04



CLB05

COLLAR OPTIONS



CLB06



CLB07



CLB08



CLB09



CLB10



CLB11



CLB12

FOOTBALL



FBL01

FBL02

FBL03



FBL04



FBL05



FBL06



FBL07



FBL08



FBL09



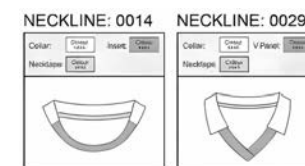
FBL10

FOOTBALL SHIRT

- Comfort fit to suit all body shapes
- Reinforced seams
- Engineered collar options
- Matching goalie jerseys available



COLLAR OPTIONS

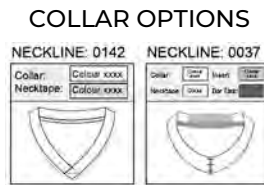


FOOTBALL SHORTS

- Comfort fit to suit all body shapes
- Reinforced seams
- Elasticised waistband



AUSTRALIAN FOOTBALL



AFL01



AFL02



AFL03



AFL04



AFL05



AFL06



AFL07



AFL08

AFL GUERNSEY

- Developed to endure the rigours of AFL football
- Reinforced seams
- Engineered collar options



AFL SHORTS

- Ultimate fit & comfort
- Reinforced seams
- Lycra gusset for extra strength



AFL09



AFL10



AFL11



AFL12



AFL13



AFL14



AFL15

BASKETBALL



BLK01



BLK02



BLK03



BLK04



BLK05



BLK06



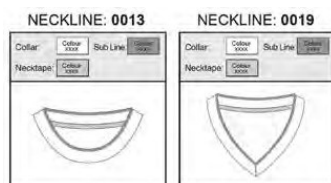
BLK07



BASKETBALL SINGLET

- Comfort fit to suit all body shapes
- Reinforced seams
- Engineered collar options

COLLAR OPTIONS



BLK08



BLK09



BLK10



BLK11



BLK12

BASKETBALL SHORTS

- Comfort fit to suit all body shapes
- Reinforced seams
- Elasticised waistband



CRICKET



CKT01



CKT02



CKT03



CKT04



CKT05



CRICKET SHIRT

- Comfort fit to suit all body shapes
- Uv sun protection
- Optional mesh panelling to Keep you cool



CRICKET PANTS

- Comfort to fit suit all body shapes
- Uv sun protection
- Reinforced seams



BLK08



BLK09



BLK10



BLK11



BLK12



NETBALL/ HOCKEY



NETBALL PRO DRESS

- Comfort fit to suit all body shapes
- Light weight, with moisture wicking technology
- Side panel to follow the natural body shape

COLLAR

NECKLINE: 0136

Collar: Round
10mm binding

Colour: xxxxx



NET01



NET02



NET03



NET04



NET05



HOC01



HOC02



HOC03



HOC04



HOC05



HOC06



HOC07

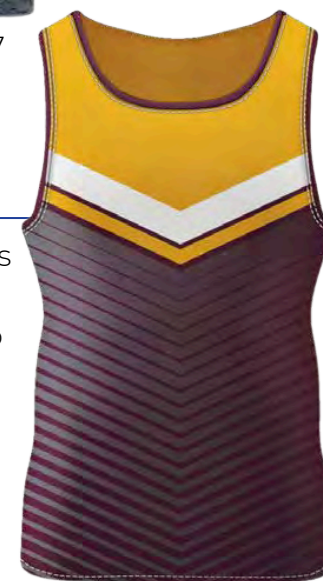
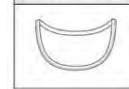
HOCKEY SINGLET

- Comfort fit to suit all body shapes
- Uv sun protection
- Optional mesh panelling to keep you cool

COLLAR

NECKLINE: 0136

Collar: Round
10mm W binding



ATHLETICS



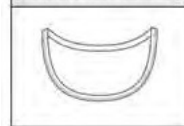
ATHLETICS SINGLET

- Comfort fit to suit all body shapes
- Uv sun protection
- Optional mesh panelling to keep you cool

COLLAR

NECKLINE: 0136

Collar: Colour xxxx
Round 10mm W binding



ATHLETICS SHORTS

- Ultimate fit & comfort
- UV sun protection
- Reinforced seams



ATH01



ATH02



ATH03



ATH04



ATH05



ATH06



ATH07



ATH08



ATH09



ATH10



ATH11



ATH12



ATH13



ATH14



A close-up, side-profile shot of a person wearing a high-collared athletic jacket. The jacket is primarily dark blue with a bright blue section on the upper back and shoulder. A white logo, resembling a stylized 'A' or '4', is visible on the blue section. Orange stripes run along the shoulder seams. The person's face is partially visible in profile, looking upwards.

TRAINING + **OUTERWEAR**



Polos **15**

tees **16**

Singlets **17**

Shorts **18**

Hoodies **19**

Track Jackets **20**

Track Pants **21**

POLOS

TRAINING POLO

- Comfort fit to suit all body shapes
- UV sun protection
- Optional mesh paneling to keep you cool



POL01



POL02



POL03



POL04



POL05



POL06



POL07



POL08



POL09



POL10



TEES



TEE01



TEE02



TEE03



TEE04



TEE05



TEE06



TEE07



TEE08



TEE09



TEE10

TRAINING TEES

- Comfort fit to suit all body shapes
- UV sun protection
- Optional mesh paneling to keep you cool

COLLAR OPTIONS

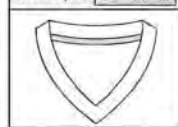
NECKLINE: 0012

Collar: Colour xxxx
Necktape: Colour xxxx



NECKLINE: 0018

Collar: Colour xxxx
Necktape: Colour xxxx



SINGLETs



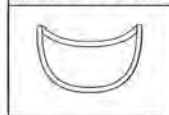
TRAINING SINGLETs

- Comfort fit to suit all body shapes
- UV sun protection
- Optional mesh paneling to keep you cool

COLLAR OPTIONS

NECKLINE: 0136

Collar: Colour xxxx
Round 10mm W binding



NECKLINE: 0141A

Collar: Colour xxxx
Necktape: Colour xxxx



SIN01



SIN02



SIN03



SIN04



SIN05



SIN06



SIN07



SIN08



SIN09



SIN10





SHO01

TRAINING SHORTS

- Styled for ultimate fit & comfort
- Reinforced seams
- Lycra gusset for extra stretch



SHO02

SHO03



SHO04

SHORTS



HOODIES



HOOD1



HOOD2



HOOD3



HOOD4



HOOD5

HOODIES

- Comfort fit to suit all body shapes
- High quality embroidery and Applique enhancements
- Cut & sew and sublimated design Options available



TRACK JACKETS



JKT01



JKT02



JKT03



JKT04



JKT05

TRACK JACKETS

- Fit to suit all body shapes
- High quality embroidery enhancements
- Cut & sew and sublimated design Options available



TRACK PANTS

TRACK PANTS

- Comfort fit to suit all body shapes
- High quality embroidery enhancements
- Cut & sew and sublimated design Options available



PNT01

PNT02



PNT03

PNT04

PNT05



FOOTBALL SOCKS



SOC01



SOC02



SOC03



SOC04



SOC05



SOC06



SOC07



SOC08



SOC09



SOC10



FOOTBALL SOCKS

- Designed for ultimate performance and comfort
- Jacquard design and club logo
- Available in turn over and non Turnover options



AT ONCE COLLECTION

FOOTBALL



FOOTBALL SHIRT



FOOTBALL SHORTS



FOOTBALL SOCKS



TRAINING SINGLET



TRAINING TEE



TRAINING POLO



HOODIE



TRACK JACKET



TRACK PANTS



AT ONCE COLLECTION

RUGBY



FOOTBALL SHIRT



FOOTBALL SHORTS



FOOTBALL SOCKS



TRAINING SINGLET



TRAINING TEE



TRAINING SHORTS



TRAINING POLO



HOODIE



TRACK PANTS



ALINTECH **FABRIC**

068- LYCRA

- Exceptional Elasticity
- Adds Comfort and Fit in High Movement Areas
- Stock Colours or Sublimation Available
- Ideal for Bike Knicks & Short Panels

016- 100% POLYESTER TWILL

Weight- 200gsm, Mechanical Strength

- Reliable & Hard Wearing
- Great Fabric for all types of Logo Application
- Available in stock colours or Sublimation
- Ideal for Rugby Shorts

011- RIP STOP

74% Nylon / 26%Polyurethane Rip Stop 140gsm, Waterproof

- Windproof
- Strong and Durable
- Ideal for Wet Weather Jackets & Pants

045- BONDED FLEECE

76% polyester / 24%Cotton DoubleKnit Interlock/ 255gsm, Water Repellent Finish

- Anti Pilling
- Retains Heat
- Stock Colours Available
- Ideal for Softshell Jackets

081 - MESH

- Light Weight to provide Comfort
- Breathability to keep the Cool in the Hottest Conditions
- Ideal for the Areas of the body that Perspire
- Ideal for Lining & Panels

004 - 100% POLYESTER TACTEL

110gsm, Water Repellent

- Mechanical Stretch, Anti Static
- Great Fabric for all types of Logo Application
- Available in stock colours or Sublimation
- Ideal for Dry Weather Jackets, Pants & Shorts

079 - STRETCH MICROFIBRE

97% Polyester / 3% Spandex 120gsm, 4 Way Stretch

- Ultimate Comfort & Flexibility
- Light Weight and Durable
- Available in stock colours or Sublimation
- Ideal for Tracksuits and Gym Shorts

155 - POLYESTER SPANDEX

88% Polyester / 7.5% Spandex / 4.5%Conductive Yarn 225gsm, Moisture Control

- 4 Way Stretch for Ultimate Flexibility
- Wrinkle Proof & Non Shrinking
- Anti Static
- Ideal for Netball, Hockey & Athletics



ALINTECH **FABRIC**

129 - PRO JERSEY

94% Polyester / 6% Spandex 375g/yd, Elastane Pique Jersey 58"

- 4 Way Stretch Provides the Ultimate Fit and Comfort
- Outstanding Wear Capability
- Created for the Professional Athlete
- Ideal AFL & Rugby Codes

005 - 100% POLYESTER PIQUE

150 gsm, Moisture Wicking

- Lightweight, Textured and Breathable
- Available in stock colours or Sublimation
- Ideal for Polo's, T-Shirts, Singlets & Shorts

008 - POLYCOTTON FLEECE

60% Cotton / 40% Polyester Fleece 280gsm

- Anti Pilling
- Brushed Fleece for Extra Warmth
- Great For All Types of Logo Applications
- Stock Colours Available
- Ideal for Hoodies & Track Pants

FOOTBALL SOCKS

85% Nylon / 11% Spandex / 4% Lycra

- Elasticated Arch and Ankle
- Stretchy, Crease Resistant & Durable
- Optional Anti Slip Grippa Available
- 35 Stock Colours Available
- Ideal for all Team Sports

139 - CLUB JERSEY

100% Polyester Pique 226gsm, Moisture Wicking

- 2 Way Stretch for Fit and Comfort
- Durable
- Ideal Fabric for all Competitors
- Ideal for AFL and Rugby Codes

009 - 100% POLYESTER MICRO MESH

150 gsm, Moisture Wicking

- Hard Wearing, Lightweight & Durable
- Available in stock colours or Sublimation
- Ideal for Polo's, T-Shirts, Singlets & Shorts

135 - PLAIN FLEECE

100% Polyester Plain Fleece 205gsm, Moisture Wicking

- Anti Pilling
- Non Fading
- Great for Complex Designs
- Sublimet or Cut & Sew
- Ideal for Poly Fleece Hoodies/Jackets & Pants



SIZE CHART

SIZE SPEC | Mens Singlet's, Tee's & Polo's

MEASUREMENT	DESCRIPTION	2XS	XS	S	M	L	XL	2XL	3XL	4XL	5XL	6XL	7XL
Half Chest	2cm below arm hole	43.5	46.5	49.5	52.5	55.5	58.5	61.5	64.5	67.5	70.5	73.5	76.5
CB Length- dropped back hem	from CB neck seam to hem edge	67	69.5	72	74.5	77	79.5	82	84.5	87	89.5	92	94.5

SIZE SPEC | Gym/ Training Shorts

MEASUREMENT	DESCRIPTION	2XS	XS	S	M	L	XL	2XL	3XL	4XL	5XL	6XL	7XL
Half Waist relaxed	-	30	32	34	36	38	41	44	46	48	50	52	54
Outside Length	Including Waistband	42	43.5	45	46.5	48	50	51.5	53	54.5	56	58.5	59.5



SIZE CHART

SIZE SPEC | Club Rugby Union & League Jersey

MEASUREMENT	DESCRIPTION	2XS	XS	S	M	L	XL	2XL	3XL	4XL	5XL	6XL	7XL
Half Chest	2cm below arm hole	41.5	45.5	49.5	53.5	57.5	61.5	65.5	69.5	73.5	77.5	81.5	85.5
CB Length- dropped back hem	from CB neck seam to hem edge	70	72	72	74	76	78	80	80	82	82	84	84

SIZE SPEC | Pro Rugby Union and League Jersey

MEASUREMENT	DESCRIPTION		XS	S	M	L	XL	2XL	3XL	4XL	5XL	6XL	7XL
Half Chest	2cm below arm hole		41	45	49	53	57	61	65	69	73	77	81
CB Length - Dropped Back Hem	from CB neck seam to hem edge		71	73	75	77	79	80	81	82	83	84	85



SIZE CHART HOW TO

HOW TO SIZE GUIDE- SHIRTS

1. Pick a similar item:

- Choose a garment that's the same style – e.g. compare a tee with another tee, not a singlet.

2. Lay it flat:

- Place the garment on a flat surface, smoothing out wrinkles.

3. Measure the chest (*Half Chest Measurement*):

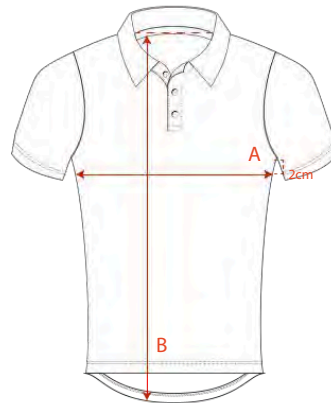
- Measure 2cm down from where the armpit seam meets the body.
- From that point, measure straight across the chest to the other side seam.
- **This is your half chest measurement.**

4. Check the size chart:

- Match your half chest measurement to the size chart to find the best size.

5. Measure the length (*Body Length*)

- On the back of the garment, measure from the centre of the neck seam down to the bottom hem.
- **This is your body length.**



HOW TO SIZE GUIDE- SHORTS

1. Pick a pair of shorts:

- Choose a pair you already own and love the fit of. Measuring helps because every style fits differently.

2. Lay them flat:

- Place the shorts on a flat surface and smooth them out.

3. Measure the waistband (*Half Waist Measurement*)

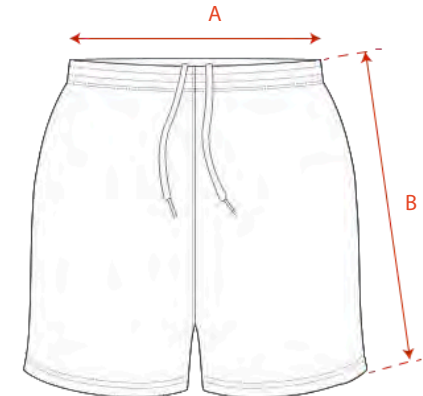
- With the waistband relaxed (not stretched), measure straight across from one side to the other.
- **This is your half waist measurement.**

4. Check the size chart:

- Use your half waist measurement to find the right size on the chart

5. Measure the leg length (*Outside Leg Length*)

- Measure from the top of the waistband down the side seam to the bottom hem.
- **This gives you the outside leg length.**






ALINTA
TEAMWEAR

www.alintaapparel.com.au